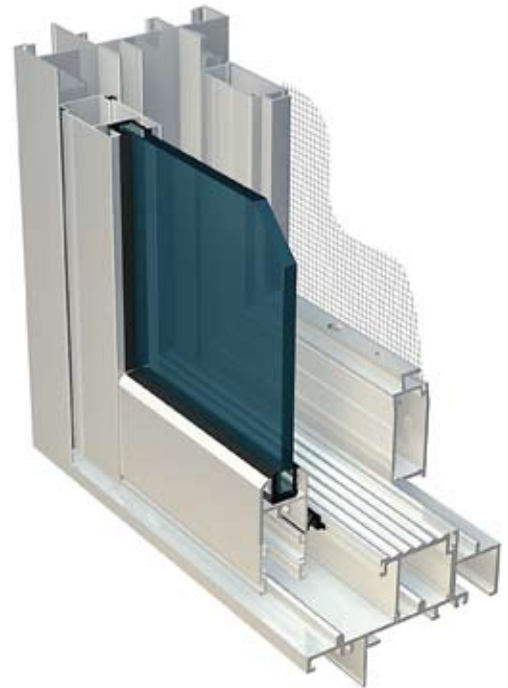


Alto Sliding/Stacking Door – 360 System

Lidco’s Alto Sliding/Stacking Door has been developed to provide a quality sliding/stacking door, ideally suited for residential housing, low/medium rise units, hotels and aged care facilities.

The system is designed on the principles of a drain joint to enhance its weathering performance and incorporates durable sash seals to protect your home from dust and moisture. The sash slides on the outside of the frame assisting in superior weathering capability. The perimeter frame incorporates insect and security screens that are located on the inside of the room, particularly popular on multi-storey buildings.

The Alto Sliding/Stacking Door can be manufactured in various framing combinations including fixed-slide, fixed-slide-fixed and centre bi-part as well as three and four panel stacking options. Perimeter framing will couple to all 100mm and 125mm fixed glass framing combinations for continuous floor to ceiling glazing. The system accepts glazing ranging from 4mm to 10.38mm single glazed and 14mm-18mm double glazed without the need of glazing adaptors.





Std Sill (Pa)

600

Single Glazed	Cooling	Heating	*Uw	*SHGC
4mm Clear	21%	32%	6.2	0.65
5mm Clear	23%	32%	6.2	0.63
5mm EverGreen	37%	23%	6.2	0.45
6mm Clear	23%	32%	6.1	0.63
6mm Energy Advantage	38%	48%	4.6	0.54
6.38mm Laminate Clear	24%	33%	6.1	0.62
6.38mm ComfortPlus Clear	39%	48%	4.6	0.53

*Notes: **Uw** is the whole window U-value
SHGC is the whole window solar heat gain coefficient

Recommended Total Panel Widths[†]
Height: 1500mm
Width: 2400mm

[†]Dependant on wind loadings, refer to Lidco limitation tables

 <p>This manufacturer certifies that this product was designed to conform with AS2047. The design performance has been verified by a NATA accredited test laboratory. This manufacturer is a member of the AWA Accreditation Program.</p>	 ACCREDITED MEMBER	DESIGN PERFORMANCE N2 000 Pa Structural <hr style="width: 50%; margin: 0 auto;"/> 000 Pa Water Resistance	ENERGY RATED  WINDOW ENERGY RATING
---	---	--	---