

# LidcoMaker News

Summer 2010

www.lidco.com.au/lidcomaker

## New Features Version 5.8

### \*\* LIDCOMAKER TRAINING COURSE \*\*

Lidco will host a FREE comprehensive training course.  
Please contact Head Office for full details.

02 8396 6033 or alternatively [support@lidco.com.au](mailto:support@lidco.com.au)

We have made some adjustments that will make it even easier and more user-friendly to use LidcoMaker. Along with improved usability we have also updated the Lidco database to include new systems and exclude discontinued ones. There is a stack of other new features including:

### CUSTOMER NAME CHARACTERS

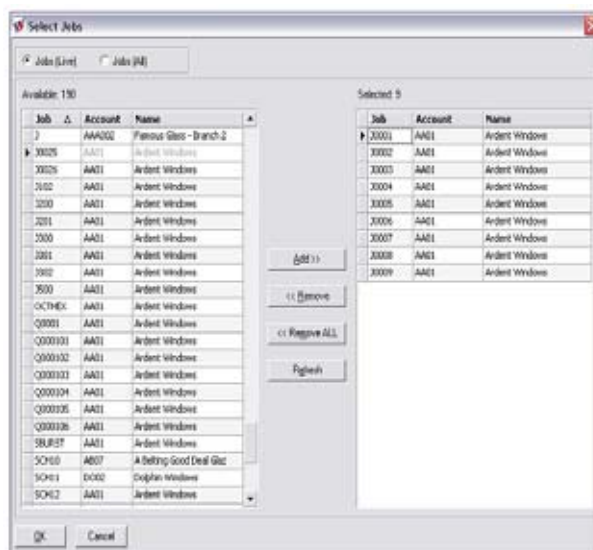
The maximum number of characters allowed for the 'Customer Name' field on the Jobs/Quotes → Customer page and Customers → Header page has been increased to 40.

### SELECT JOBS

The 'Select Jobs' (right) dialogue has been revamped with a new user-friendly interface.

This interface offers time saving features like:

- Filter, sort or search for jobs based on Job No., Account or Customer Name.
- Selecting multiple records for adding to or removing from a batch.
- Display of the number of available and selected records. An option to only display Live Jobs in the list of available jobs.



LidcoMaker

### CORNER JOINS

LidcoMaker now provides the facility of changing the continuity of the corner/crucifix joins for individual profiles during order entry.



LidcoMaker

## Page 2

- Angled Heads

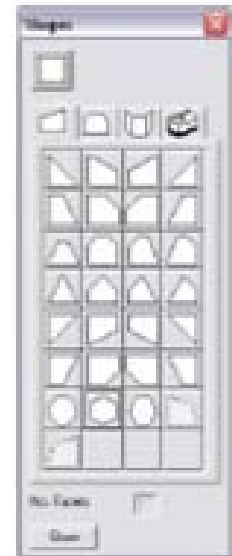
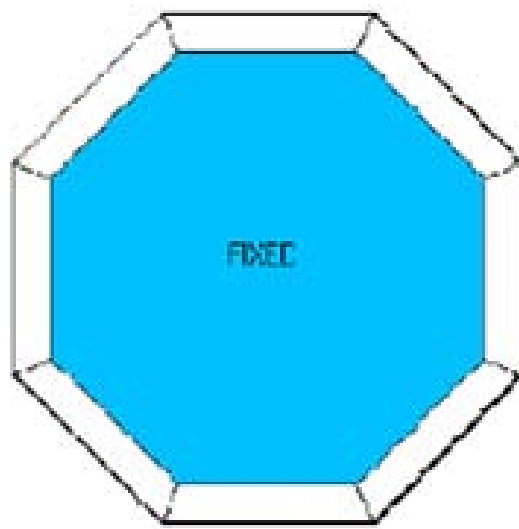
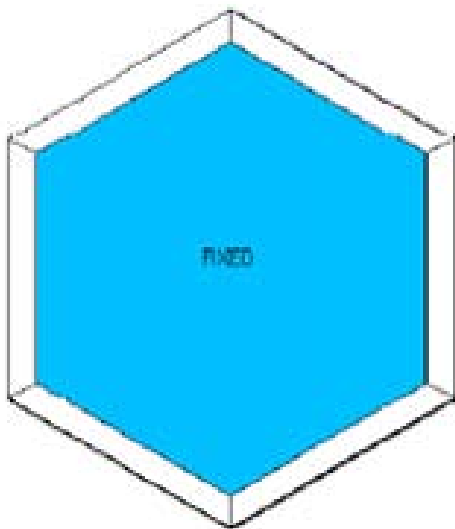
- LidcoMaker Reports

- Database Updates

# New Features continued

## ANGLED HEADS

In Order Entry, with the Angled Heads options, you can now create Octagon and Hexagon shaped items.



LidcoMaker

## LIDCOMAKER REPORTS

Production Document' (right) report now outputs the 'Frame size' along with the overall size for any single framed item having Overall part(s).

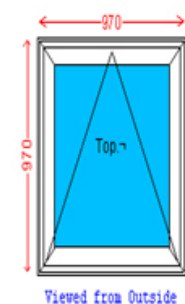
## DATABASE UPDATES

- Removal of old LIDCO systems no longer promoted by LIDCO
- Updated formula with profile substitution
- Finish color setup on graphics of the item
- Price update for all LIDCO profiles
- Hardware setup for all systems
- Warning and error message setup as per change in LIDCO recommendation
- Up gradation of LidcoMaker program version to v5.8.
- Modification of data to enable new functionality of Windowmaker such as modifying corner/crucifix and printing quotation with profile finish.
- Updating format of Lidcomaker reports such as Part Usage, Glass usage & Production document.

### Production Document

Job: J0027 / 0001  
 Account : AA01 Ardent Windows  
 System : SY01 Int. Glazed Casement  
 Design : 3  
 Description : Casement TOP PL  
 Size : 1000w x 1000h  
 Frame size : 970w x 970h  
 Glazing : 4-12-4 Clear  
 Quantity : 1  
 PVC Colour : Brown  
 Frame extension : 15mm  
 Outer Frame : 56mm

### Windowmaker Software V5



LidcoMaker