

LidcoMaker back up instructions

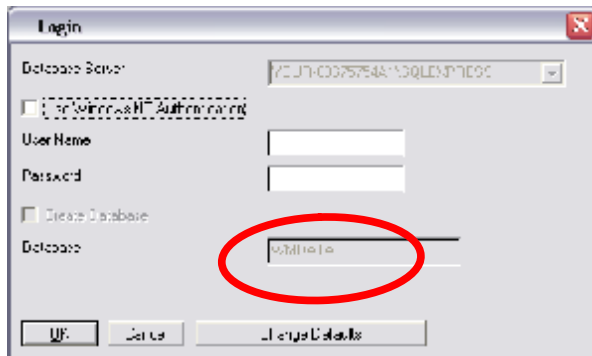
2 pieces of data to back up

1. Database

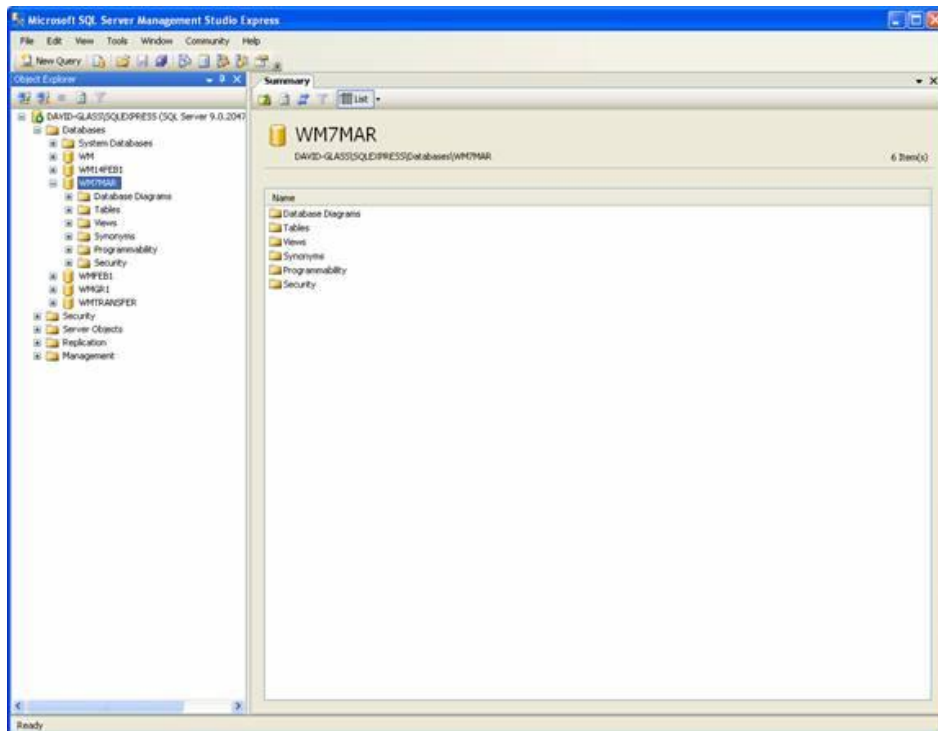
Open/Start

All programs > Microsoft SQL server 2005 > SQL Server Management studio express > Connect > when using SQL Authentication mode the password should be "WM"

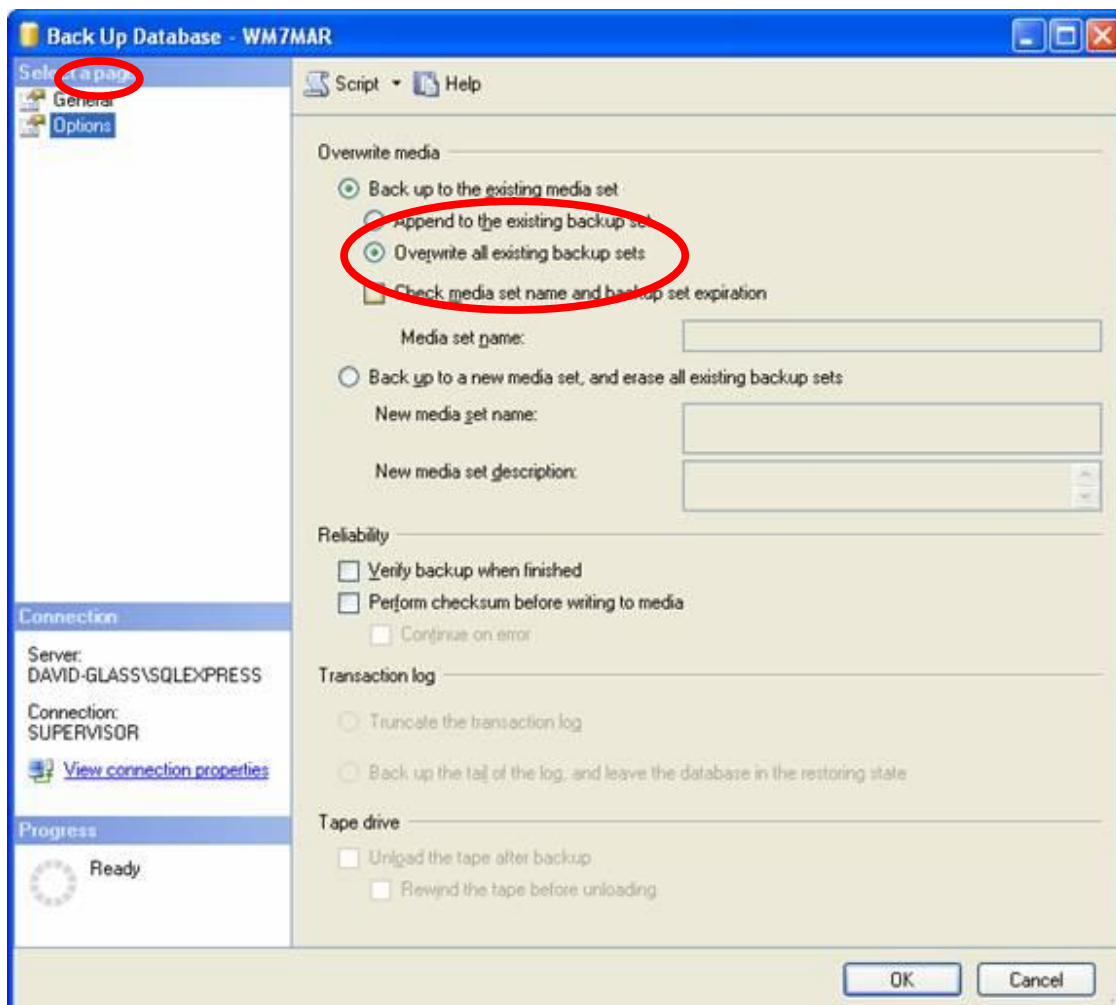
Identify which database is being used. In the case of multiple databases refer to the LidcoMaker login page as below for the database title as below



Right click on database required to be backed up > Select Tasks > backup overwrite

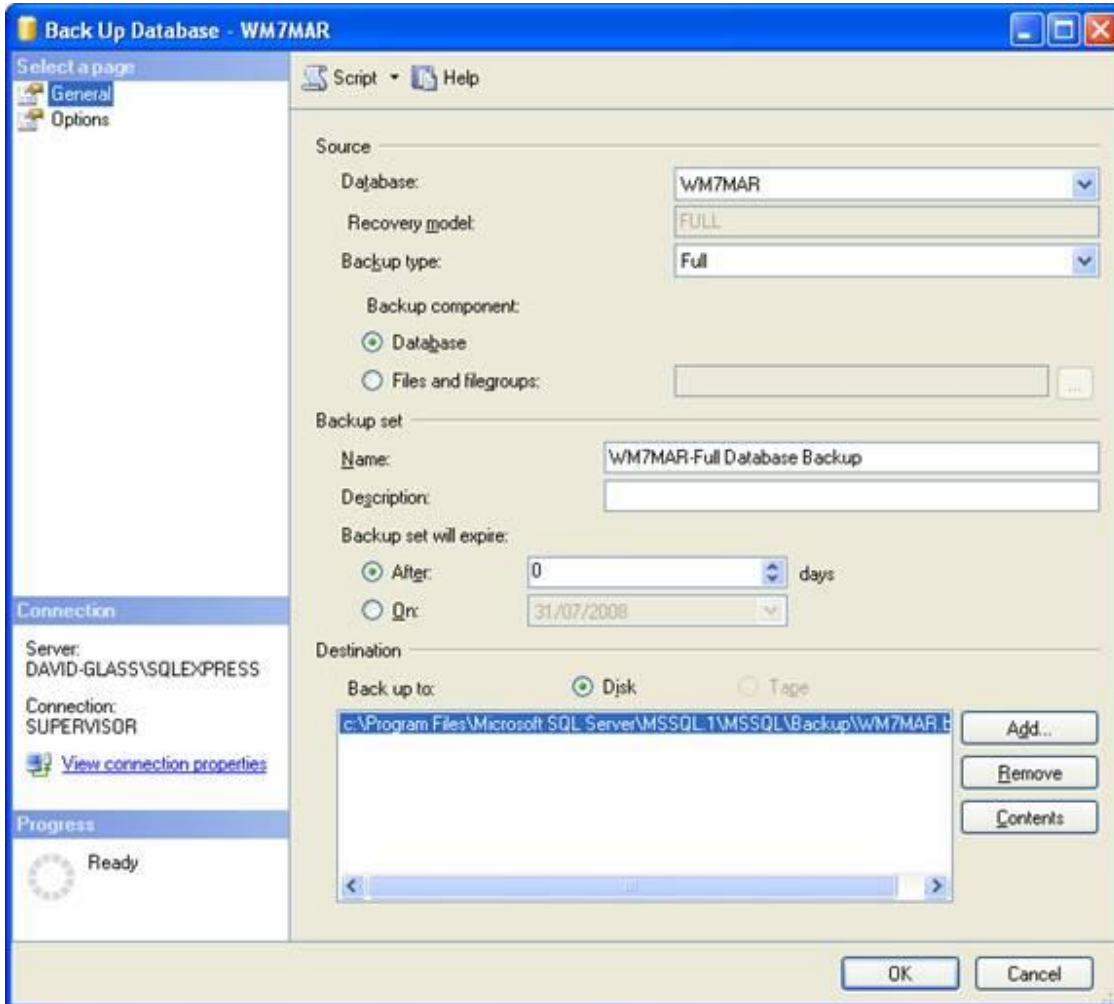


Select Options Tab - >



This will save the data in the folder;

c:\Program Files\Microsoft SQL Server\MSSQL.1\MSSQL\Backup\WM7MAR.BAK



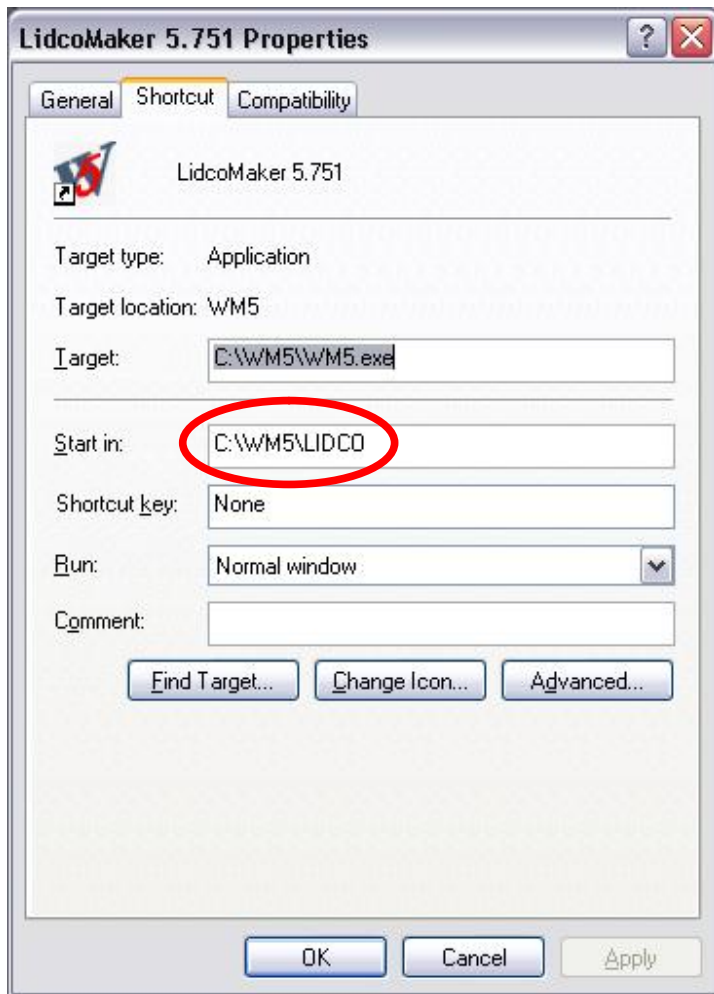
2. Data

Complete Backup of C-Drive covers this

Or

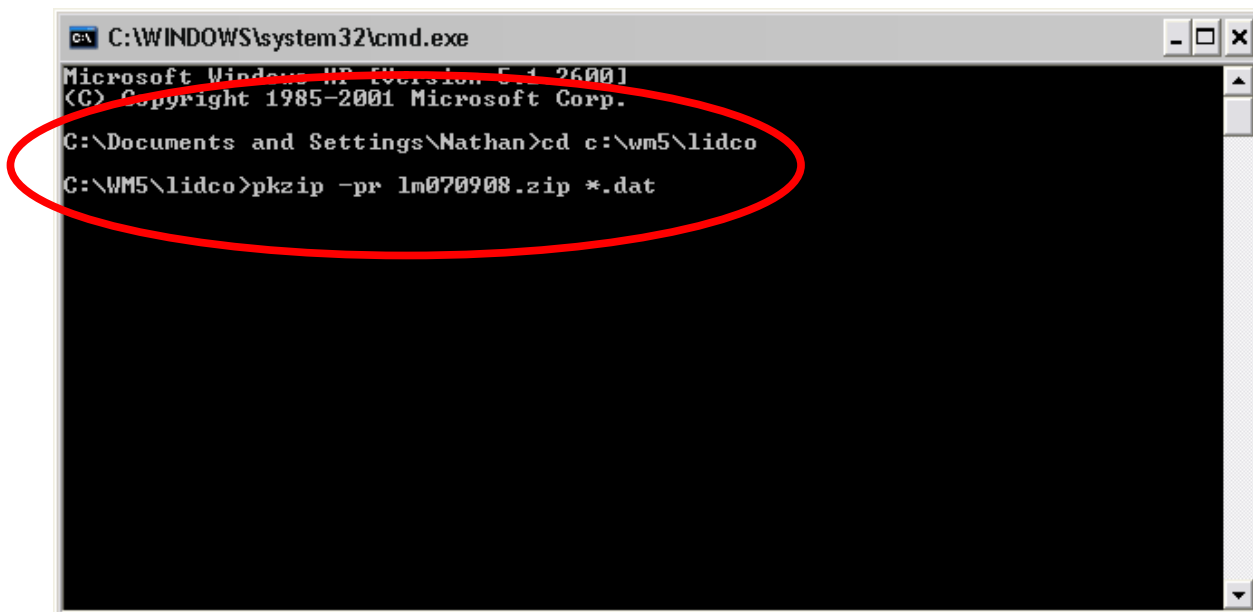
Start > Run > cmd

As per the LidcoMaker properties page (right click on Lidcomaker icon and select properties) the data is stored in the location designated by the "Start In" box



To gain the correct directory type "cd (space) then the folder"

To back up the dat files only (the rest aren't required) type "pkzip -pr LMxxxxxx.zip *.dat"



This will save a file lm070908.zip in your C:\WM5\5740\LIDCO folder
Each time save the next one as the next number, the number being the date.