

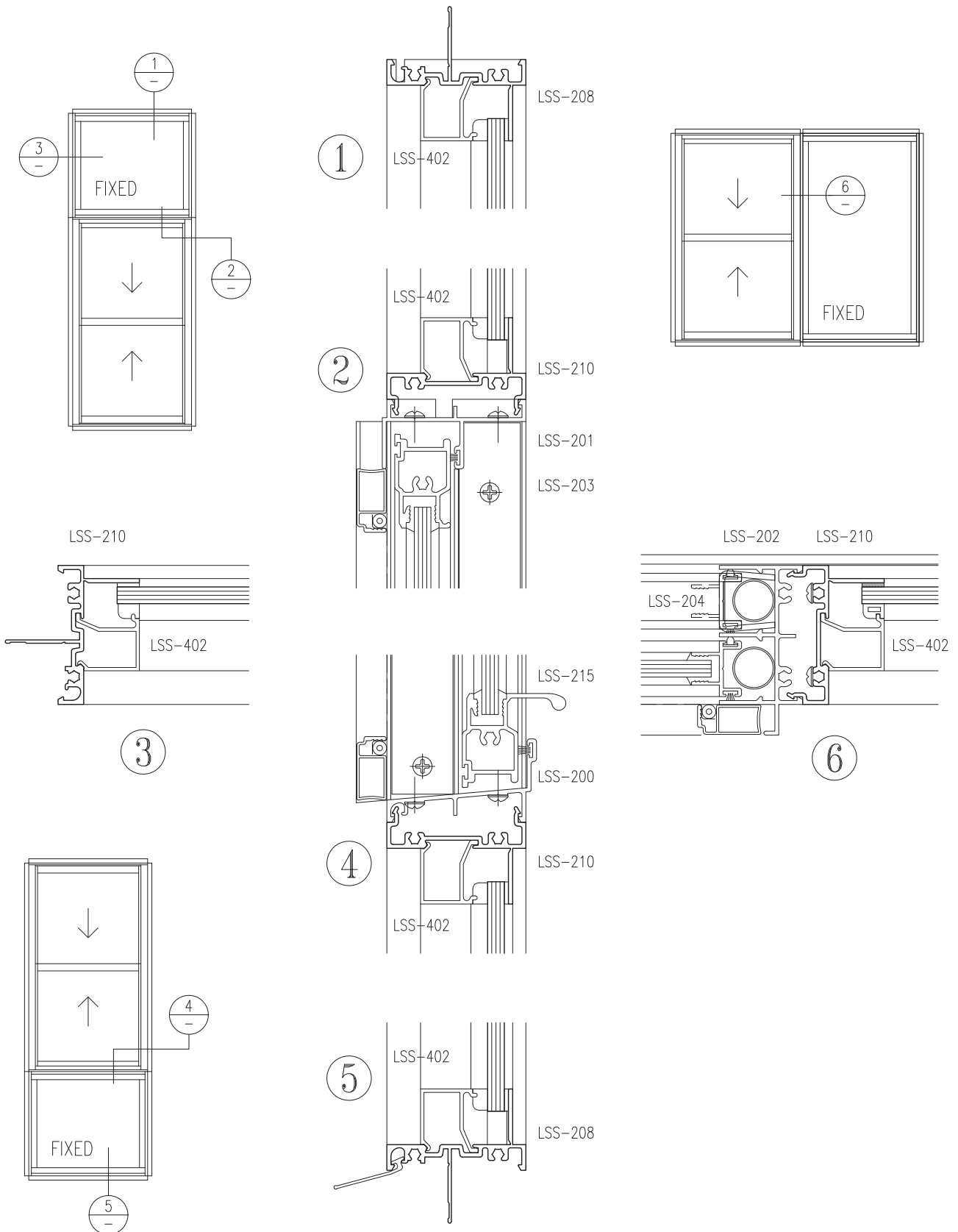


CONTEMPORARY RANGE 121 SYSTEM Lifestyle™ Double Hung Window

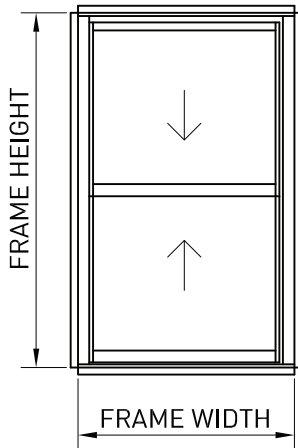
Specifier Guide

The Lidco Specifier's Guide contains technical information, maximum permissible sizes, typical configurations, energy ratings and key design features and benefits.



Typical Configurations


Loading Tables

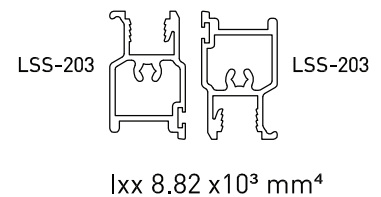


The following calculations are based on theoretical section properties, not on approved tests as specified by AS2047. The Design Wind Pressure is used to calculate the theoretical maximum panel size and does not account for Water Penetration. For more detailed information on suitability please contact Lidco directly.

Residential Deflection ratio, $K = 180$

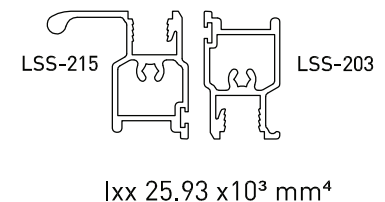
INTERLOCK TYPE 1 - RESIDENTIAL

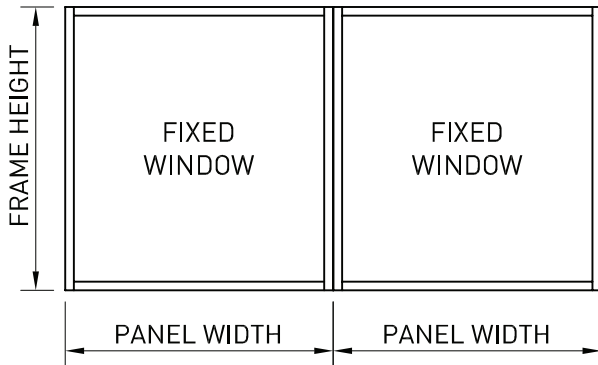
Frame Width	600	700	800	900	1000	1100	1200
600	3.0kPa	3.0kPa	1.5kPa	1.0kPa	1.0kPa	0.7kPa	0.5kPa
700	3.0kPa	3.0kPa	1.5kPa	1.0kPa	0.7kPa	0.5kPa	0.5kPa
800	3.0kPa	2.2kPa	1.5kPa	1.0kPa	0.7kPa	0.5kPa	-
900	3.0kPa	2.2kPa	1.5kPa	1.0kPa	0.7kPa	0.5kPa	-
1000	3.0kPa	2.2kPa	1.0kPa	0.7kPa	0.5kPa	-	-
1100	3.0kPa	2.2kPa	1.0kPa	0.7kPa	0.5kPa	-	-
1200	3.0kPa	2.2kPa	1.0kPa	0.7kPa	0.5kPa	-	-
1300	3.0kPa	2.2kPa	1.0kPa	0.7kPa	0.5kPa	-	-
1400	3.0kPa	1.5kPa	1.0kPa	0.7kPa	0.5kPa	-	-
1500	3.0kPa	1.5kPa	1.0kPa	0.7kPa	0.5kPa	-	-



INTERLOCK TYPE 2 - RESIDENTIAL

Frame Width	600	700	800	900	1000	1100	1200
600	3.0kPa	3.0kPa	3.0kPa	3.0kPa	3.0kPa	2.2kPa	1.5kPa
700	3.0kPa	3.0kPa	3.0kPa	3.0kPa	2.2kPa	1.5kPa	1.0kPa
800	3.0kPa	3.0kPa	3.0kPa	3.0kPa	2.2kPa	1.5kPa	1.0kPa
900	3.0kPa	3.0kPa	3.0kPa	3.0kPa	1.5kPa	1.5kPa	1.0kPa
1000	3.0kPa	3.0kPa	3.0kPa	2.2kPa	1.5kPa	1.0kPa	1.0kPa
1100	3.0kPa	3.0kPa	3.0kPa	2.2kPa	1.5kPa	1.0kPa	1.0kPa
1200	3.0kPa	3.0kPa	3.0kPa	2.2kPa	1.5kPa	1.0kPa	0.7kPa
1300	3.0kPa	3.0kPa	3.0kPa	2.2kPa	1.5kPa	1.0kPa	0.7kPa
1400	3.0kPa	3.0kPa	3.0kPa	2.2kPa	1.5kPa	1.0kPa	0.7kPa
1500	3.0kPa	3.0kPa	3.0kPa	2.2kPa	1.5kPa	1.0kPa	0.7kPa

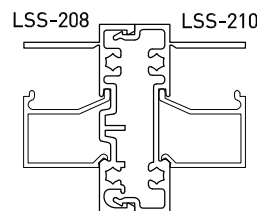


Loading Tables


Note:
The following figure is calculated based on fixed window only.

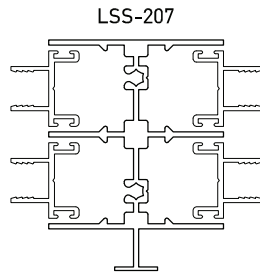
MULLION TYPE 1 - RESIDENTIAL (FIXED WINDOW)

Panel Width	600	700	800	900	1000	1100	1200
600	3.0kPa	3.0kPa	3.0kPa	3.0kPa	3.0kPa	3.0kPa	3.0kPa
700	3.0kPa	3.0kPa	3.0kPa	3.0kPa	3.0kPa	3.0kPa	3.0kPa
800	3.0kPa	3.0kPa	3.0kPa	3.0kPa	3.0kPa	3.0kPa	3.0kPa
900	3.0kPa	3.0kPa	3.0kPa	3.0kPa	3.0kPa	3.0kPa	3.0kPa
1000	3.0kPa	3.0kPa	3.0kPa	3.0kPa	3.0kPa	3.0kPa	3.0kPa
1100	3.0kPa	3.0kPa	3.0kPa	3.0kPa	3.0kPa	3.0kPa	3.0kPa
1200	3.0kPa	3.0kPa	2.2kPa	2.2kPa	2.2kPa	2.2kPa	2.2kPa
1300	2.2kPa	2.2kPa	1.5kPa	1.5kPa	1.5kPa	1.5kPa	1.5kPa
1400	1.5kPa	1.5kPa	1.5kPa	1.5kPa	1.0kPa	1.0kPa	1.0kPa
1500	1.5kPa	1.0kPa	1.0kPa	1.0kPa	1.0kPa	1.0kPa	1.0kPa
1600	1.0kPa	1.0kPa	1.0kPa	0.7kPa	0.7kPa	0.7kPa	0.7kPa
1700	1.0kPa	0.7kPa	0.7kPa	0.7kPa	0.7kPa	0.7kPa	0.5kPa
1800	0.7kPa	0.7kPa	0.7kPa	0.5kPa	0.5kPa	0.5kPa	0.5kPa

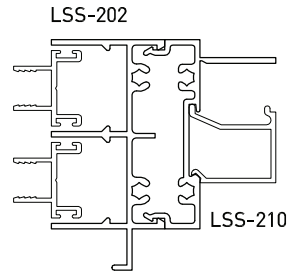
MULLION TYPE 1


1xx 108.99 x10³ mm⁴

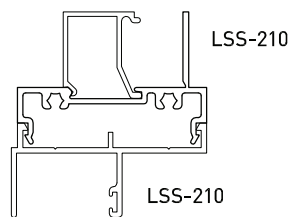
Loading Tables



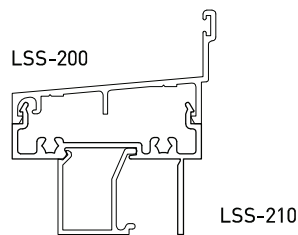
lxx 140.61 x10³ mm⁴



lxx 151.25 x10³ mm⁴



lxx 99.97 x10³ mm⁴



lxx 112.35 x10³ mm⁴

Test Results

121 LIFESTYLE double hung window - XX - single glazed 4mm

Serviceability load	+/- 1.05 kPa
Ultimate load	+/- 1.05 kPa
Water penetration	150 Pa
Air infiltration @75Pa	+ 2.667 l/s/m ² - 3.359 l/s/m ²
Operating force (initiating)	52.07 N
Operating force (maintaining)	35.49 N
Test sample size	1.5m high x 0.9m wide
Test report number	NSW 310-90115