

Not to scale

Up to date stocking status can be viewed at www.lidco.com.au/indices

00-042 – Latch (Metal)

For 112, 422 and
746 Systems


00-043 – Short Cam Lock (Key 92615)

For 422 and
746 Systems


01-029 – Window Roller (15kg Stainless Steel)

Suitable for 400-400


01-540 – Window Roller (12kg Black Plastic)

Suitable for LSS-102
and 400-400


02-015 – 4mm Woolpile

02-016 – 6.3mm Woolpile

02-019 – Fin Seal 48 T Slot 4.25mm

02-020 – Fin Seal 48 T Slot 6.5mm

02-040 – 4mm Q-Lon

02-082 – Bulb Seal (PVC)


COMMERCIAL RANGE 740 SYSTEM

Pinnacle™ Narrow Sash Sliding Window



Up to date stocking status can be viewed at www.lidco.com.au/indices

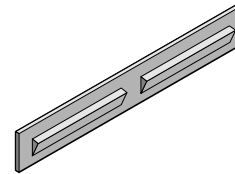
Not to scale

03-026 – End Plate (Top Rail)

For 740 System only



03-044 – Skid Block



03-321 – Anti-lift Block

For 422 and 746 Systems



04-083 – 4mm Glazing Wedge

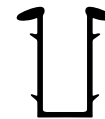


04-140 – 5mm Glazing Channel



04-141 – 6mm Glazing Channel

For 400 System only



Not to scale

 Up to date stocking status can be viewed at www.lidco.com.au/indices

PINNACLE™ NARROW SASH SLIDING WINDOW – 740 SYSTEM – HARDWARE SUMMARY			
Item No	Description	Colour	Material
00-042	Jamb Latch	black	aluminium
00-043	Jamb Latch Keyed	black	plastic
01-029	Stainless Steel Roller		stainless steel
01-540	Window Roller – 12kg	black	plastic
02-015	4mm Woolpile	black	
02-016	6.3mm Woolpile	black	
02-019	4.25mm Finseal	black	
02-020	6.25mm Finseal	black	
02-040	4mm Q-Lon Seal	black	
02-082	Bulb Seal	black	PVC
03-026	End Plate Top Rail	black	plastic
03-044	Skid Block	black	plastic
03-321	Anti-Lift Block	black	plastic
04-083	Glazing Channel – 4mm	black	PVC
04-140	Glazing Channel – 5mm	black	PVC
04-141	Glazing Channel – 6mm	black	PVC