

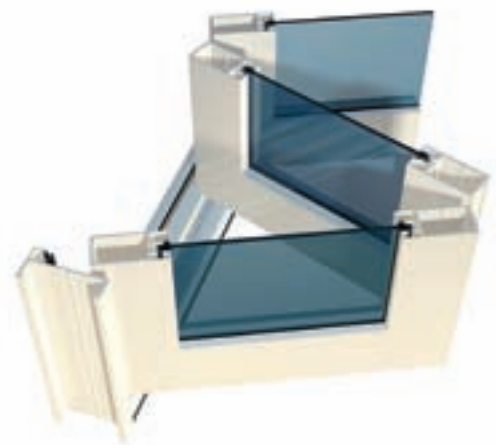


## Overview

The Pinnacle™ Bifold Door is a top-hung bifold door ideal for the commercial or architectural residential market. The door panels can be either single or double glazed.

## Features

- The doors that make up this system are 44mm thick making for robust panels – door heights of up to 3m are possible
- Single glazing options range from 4mm to 10.38mm
- The double glazed option is designed to accept a 22mm IGU without the need to add unsightly glazing adaptors
- The system incorporates the Brio Wetherfold Coastal 75 bifold stainless steel hardware capable of maximum panel weights of up to 75kg
- The heavy duty track is designed to easily support large panels
- Can incorporate a single panel hinged door allowing daily access without having to completely open the bifold system
- Suitable for in-swing operation with the incorporation of a subsill
- The 100mm frame allows for numerous sidelight options using an extensive range of Lidco's fixed panel framing systems and window systems, including the Klimat Lanai Louvre™
- In areas protected from the weather the sill track can be replaced with a floor guide set into the floor
- Hardware options have been chosen in the context of the special needs of bifold systems – for example, the hinges conveniently incorporate a built-in handle to aid door closure
- Slimline hardware allows for neat stacking of the door panels
- A specially designed flush bolt channel in the head and sill assist with installation and adjustment of the flush bolt positions, eliminating the need to drill unsightly holes in the framing
- The system is available with cast stainless steel flush bolts which include a moulded rod guide to suit the stile



Maximum Panel Height	3000mm
Maximum Panel Width	1000mm
Maximum Glass Thickness	≤22mm IGU



\*Standard sill used (with sub-sill rating is 600Pa)

Design Performance	
Serviceability Wind Pressure	1500Pa
Overall Classification	N4



## How to Specify

- Aluminium frames to be manufactured using Lidco 744 System: Pinnacle™ Bifold Door
- Perimeter frame to be Lidco 100x50mm framing and door panels to be Lidco 44mm commercial grade sash
- Selected framing to be engineered, manufactured and installed in accordance with: AS 2047-2048 (Windows in Buildings), AS/NZS 1170 (Loading Code), AS/NZS 1664 (Aluminium Structures Code)
- Selected glazing to be in line with performance requirements as set out in AS 1288 (Glass in Buildings)
- Size limitations are governed by design intent, glass selection and local wind load and deflection requirements

## AutoSpec Specification

All Lidco residential and commercial window and door systems are available in AutoSpec, the intelligent web-based specification engine. AutoSpec allows the Specifier to select the Lidco systems that meets their needs, specify them accurately and then complete the project specification text automatically.



[www.autospec.com.au](http://www.autospec.com.au)



For any specification assistance please call to speak to one of our friendly and knowledgeable technical sales team on 1300 663 848 or email [techsupport@lidco.com.au](mailto:techsupport@lidco.com.au)



744 System Specifier Guide, CAD, PDF files and more are available at [www.lidco.com.au](http://www.lidco.com.au)

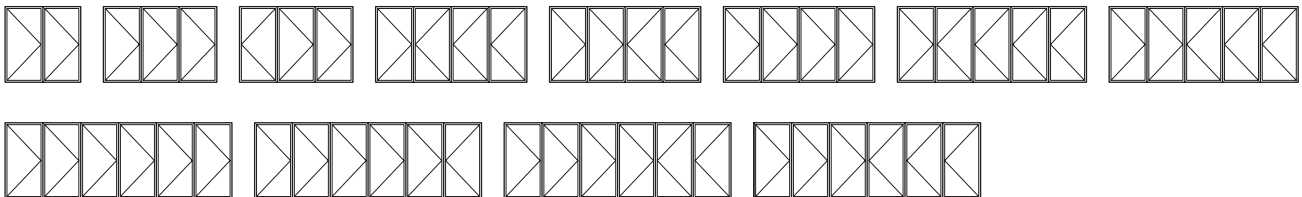
## WERS Energy Ratings



Glazing	Cooling	Heating	Uw*	SHGC*	Tvw*	Air Inf.
5mm Clear	28%	16%	6.1	0.58	0.59	0.19
6mm Clear	29%	16%	6.0	0.58	0.59	0.19
6.38mm ComfortPlus Clear	44%	31%	4.6	0.48	0.55	0.19
6mm EG / 7mm Air / 5mm EA	62%	26%	3.9	0.26	0.36	0.19
5mm Clr / 8mm Air / 5mm EA	48%	39%	3.8	0.47	0.49	0.19

\*Notes: **Uw** is the whole window U-value, **SHGC** is the whole window solar heat gain coefficient  
**Tvw** is the whole window visible (light) transmittance  
 More energy ratings available at [www.lidco.com.au/energy-ratings](http://www.lidco.com.au/energy-ratings)

## Typical Configurations



Lidco Corporation Pty Ltd  
 T 1300 663 848  
[techsupport@lidco.com.au](mailto:techsupport@lidco.com.au)  
[www.lidco.com.au](http://www.lidco.com.au)

Founded in Australia over 65 years ago Lidco is a leading designer and supplier of contemporary and high performance residential and commercial aluminium window and door systems