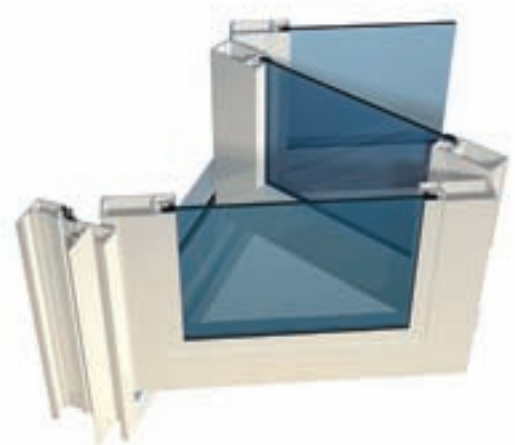


Overview

Bifold doors are a great alternative to sliding doors as the door panels fold back out of the way allowing obstruction-free access and uninterrupted views. The Lifestyle™ Bifold Door is ideal for residential and commercial applications, including courtyards, balconies, room dividers, cafes and restaurants. The panel height can be up to 2.5m and numerous panel configurations fit within a 100mm frame. High water performance and thermal efficiency are other highlights of this excellent bi-folding system. A range of retractable screening systems can be easily fitted to the frame. Careful attention to the design of the seals fitted to the sash and frame results in excellent water, thermal and air infiltration properties.

Features

- High precision fully adjustable top rollers support the folding panels ensuring that the track is clean and easy to operate
- Suitable for exposed locations due to the unique use of sash and perimeter frame seals and choice of high quality Centor E2 Eclipse bifold hardware
- Single glazing options range from 4mm to 10.38mm
- The double glazed option is designed to accept up to 22mm IGU's without the need to add unsightly glazing adaptors
- Can incorporate a single panel hinged door allowing daily access without having to completely open the bifold system
- Suitable for inswing operation with the incorporation of a subsill
- The 100mm frame allows for numerous sidelight options using an extensive range of Lidco's fixed panel framing systems and window systems, including the Klimat Lanai Louvre™
- Unique jamb pivots are designed for easy adjustment of doors horizontally and vertically without having to remove the door panels
- In areas protected from the weather the sill track can be replaced with a floor guide set into the floor
- Hardware options have been chosen in the context of the special needs of bifold systems – for example, the hinges conveniently incorporate a built-in handle to aid door closure, also the slimline flush bolt hardware allows for neat stacking of the door panels
- Optional applied colonial bars for 'Heritage' look



| | |
|-------------------------|-----------|
| Maximum Panel Height | 2500mm |
| Maximum Panel Width | 800mm |
| Maximum Glass Thickness | ≤22mm IGU |



*Standard sill used

| Design Performance | |
|------------------------------|--------|
| Serviceability Wind Pressure | 1000Pa |
| Overall Classification | N3 |



How to Specify

- Aluminium frames to be manufactured using Lidco 615 System: Lifestyle™ Bifold Door
- Selected framing to be engineered, manufactured and installed in accordance with: AS 2047-2048 (Windows in Buildings), AS/NZS 1170 (Loading Code), AS/NZS 1664 (Aluminium Structures Code)
- Selected glazing to be in line with performance requirements as set out in AS 1288 (Glass in Buildings)
- Size limitations are governed by design intent, glass selection and local wind load and deflection requirements

AutoSpec Specification

All Lidco residential and commercial window and door systems are available in AutoSpec, the intelligent web-based specification engine. AutoSpec allows the Specifier to select the Lidco systems that meets their needs, specify them accurately and then complete the project specification text automatically.



www.autospec.com.au



For any specification assistance please call to speak to one of our friendly and knowledgeable technical sales team on 1300 663 848 or email techsupport@lidco.com.au



615 System Specifier Guide, CAD, PDF files and more are available at www.lidco.com.au

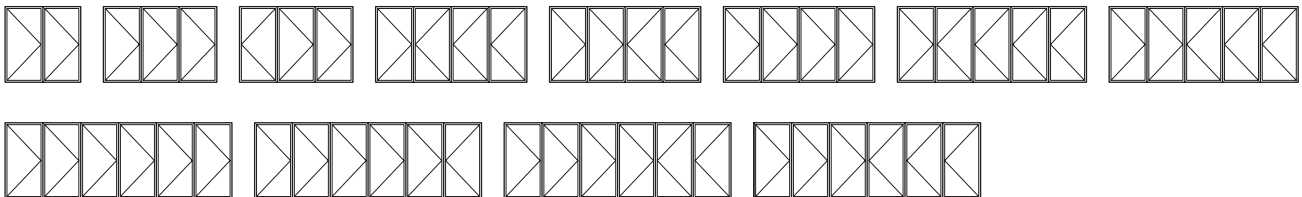
WERS Energy Ratings



| Glazing | Cooling | Heating | Uw* | SHGC* | Tvw* | Air Inf. |
|-------------------------------------|---------|---------|-----|-------|------|----------|
| 5mm Clear | 26% | 15% | 6.2 | 0.60 | 0.62 | 0.21 |
| 6mm Clear | 26% | 15% | 6.2 | 0.60 | 0.62 | 0.21 |
| 6.38mm ComfortPlus | 51% | 24% | 4.7 | 0.37 | 0.41 | 0.21 |
| 5mm Clear / 8mm Air / 5mm EA | 46% | 41% | 3.8 | 0.50 | 0.52 | 0.21 |
| 6.38mm Lam / 10mm Ar / 6.38mm CPCLr | 49% | 45% | 3.4 | 0.49 | 0.52 | 0.21 |

*Notes: **Uw** is the whole window U-value, **SHGC** is the whole window solar heat gain coefficient
Tvw is the whole window visible (light) transmittance
 More energy ratings available at www.lidco.com.au/energy-ratings

Typical Configurations



Lidco Corporation Pty Ltd
 T 1300 663 848
techsupport@lidco.com.au
www.lidco.com.au

Founded in Australia over 65 years ago Lidco is a leading designer and supplier of contemporary and high performance residential and commercial aluminium window and door systems